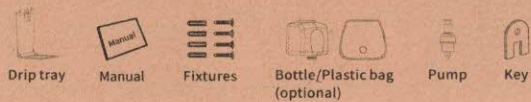
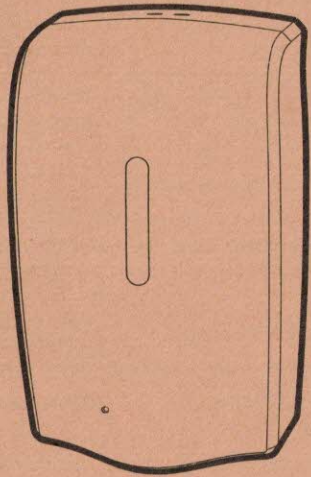
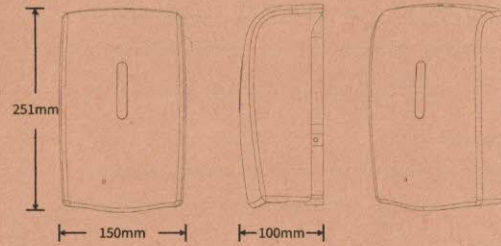


Automatic Soap Dispenser Manual



Product Parameters

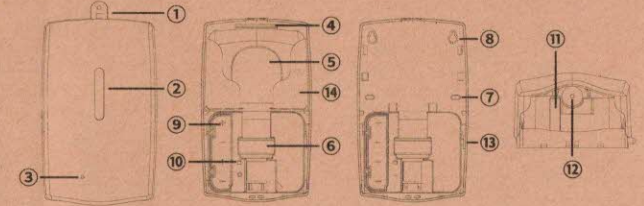


Product	Automatic Soap Dispenser
Dimension	150*251*100mm
Induction method	Infrared reflective
Induction distance	50-100±20mm
Material	ABS/PP/PC
Bottle capacity	1000ml
Liquid	Foam/Spray/Gel
Output	0.6ml/time
Power	4*C-size battery/ DC6V (optional)
Battery lifetime	55,000 times

1

Product Presentation

- | | |
|-----------------------------|------------------------------|
| 1.Key | 8.Wall-mounted holes |
| 2.Window | 9.Battery cartridge |
| 3.Indicator light | 10.Switch button |
| 4.Bottle cap | 11.Induction window |
| 5.Bottle | 12.Spout |
| 6.Output pump | 13.Adapter interface |
| 7.Anti-theft mounting holes | 14.Baffle (for plastic bags) |

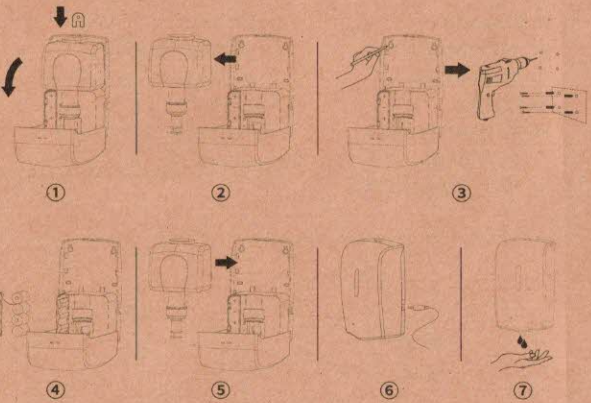


Precautions

- Do not rinse directly with water or volatile liquids such as thinner, benzene, gasoline, etc.
- Devices should be placed in a clean room and used at room temperature. Do not place it in sunlight, high temperature, high humidity, dust directly.
- If you use the adapter for long-term power supply, be sure to remove the batteries.
- Do not disassemble the device or cut/lengthen the electric cord.
- Prevent children from playing. Flush your eyes with plenty of water if there is any liquid splash into them.

2

Installation Introduction



1. Open the front cover with key; (Figure 1)
2. Take out the bottle/plastic bag; (Figure 2)
3. Match and drill holes, fix the device on the wall (Figure 3)
4. Put batteries into the battery cartridge; (Optional)(Figure 4)
5. Put the bottle/plastic bag back; (Figure 5)
6. Connect to electric power with adapter; (Optional) (Figure 6)
7. Get your hand close to get the sanitizer. (Figure 7)

Operation Directions

Turn on:

- Close the front cover after batteries on.
- Plug the adapter after closing the cover.
- * The indicator light will flash in red once.

Turn off:

- Open the front cover after batteries on.
- * The indicator light will flash in red twice.

Induction:

Put your hand under the induction window/ nozzle and wait for about 1 second.

*Approach the induction window, dispenser will dispense once; if you need more disinfectant, remove your hand and then approach it again.

Note:

After power on,the indicator light will flash in red twice.

Signal of Power

When operating	Indicator light is on in red during induction.	Sufficient power
	Indicator light flashes in red for 5 times.	Low power

Failure Analysis

Failure	Possible problem	Solution
Light off while power on	Batteries are installed by mistake	Check whether batteries are installed correctly.
	Batteries are out of power	Check whether batteries are out of power(each one)
	Power is off if using adapter	Check whether the power is on
Light off while close the cover and power on	Power cut suddently	Check whether the adapter (batteries) is loose
	Batteries are out of power	Check whether batteries are out of power(each one)
	Button failure	Check whether button is blocked
Gear out of work	Gear defective	Replace gears
	Infrared sensor problem	Whether the sensing distance is too close/far
Dispense several times	Limit sensing problem	Check whether the magnet of the gear box is off or whether there is a problem with the Hall element